

## LOCATION

- The GMD can be line, bracket or panel mounted.
- For liquid applications the GMD should be installed below the primary element in a level position (see *Figure 1*). If recommended mounting is not possible, care must be taken to ensure that the gage is vented periodically.

## INSTALLATION

1. The connecting tubing between the primary element and the gage should be as short as possible and should slope a minimum of 1 inch per foot.
2. Secure and support tubing to prevent sagging and or vibration.
3. Make sure the head heights are even.
4. Run a bleed line from the GMD vent valves to a pan or drain.

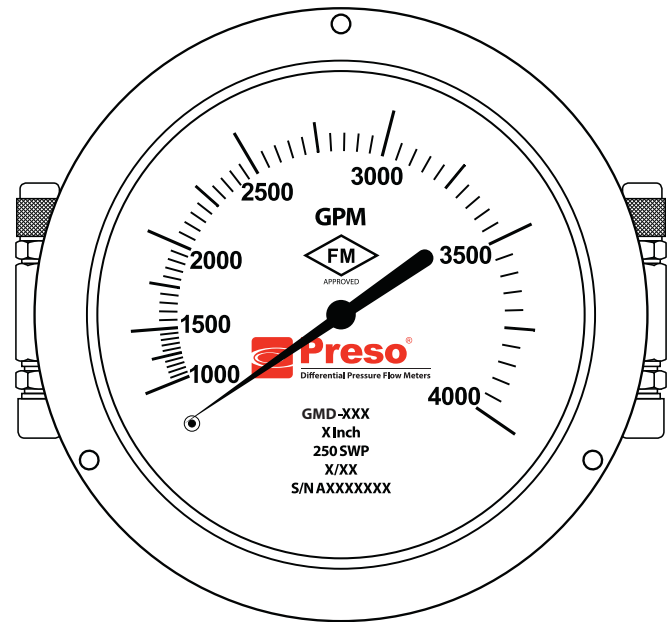
## OPERATION

1. Identify Hi and Lo pressure inlets on the GMD.
2. Open the blue bypass valve \*

### **⚠ WARNING**

**\*GAGE MAY BE DAMAGED IF INITIALLY PRESSURIZED WITH BYPASS VALVE CLOSED.**

3. Connect GMD to corresponding Hi and Lo pressure taps of the primary element (via three-valve manifold, if being used).
4. Open Hi and Lo instrument valves on the primary element.
5. Alternately open the Hi and Lo vent valves to purge the lines.
6. When venting is complete, close the bypass valve to begin taking readings.



## MAINTENANCE

Normal operation requires no maintenance. In case of dirt or scale build-up, flush the meter with clean water or a compatible solvent.

Contact your local representative if you have any questions regarding PRESO products.

**Recommended Liquid Installation**

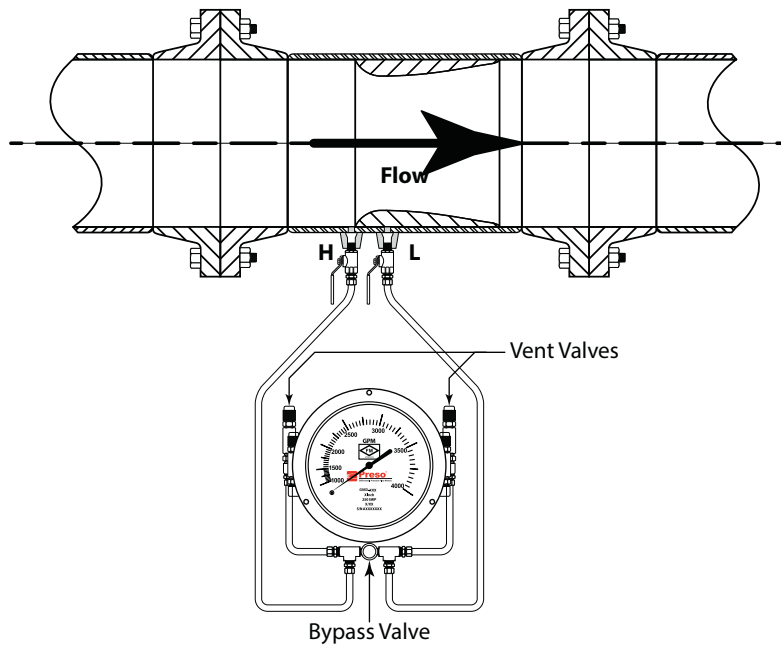


Figure 1: Recommended liquid installation

**Typical Fire Pump Installation**

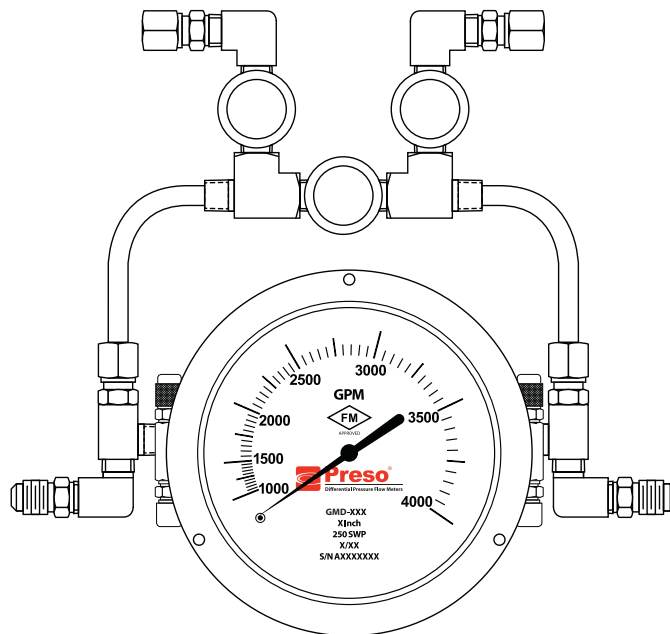


Figure 2: Typical fire pump installation

**Control. Manage. Optimize.**

PRESO is a registered trademark of Badger Meter, Inc. Other trademarks appearing in this document are the property of their respective entities. Due to continuous research, product improvements and enhancements, Badger Meter reserves the right to change product or system specifications without notice, except to the extent an outstanding contractual obligation exists. © 2017 Badger Meter, Inc. All rights reserved.

[www.badgermeter.com](http://www.badgermeter.com)

The Americas | Badger Meter | 4545 West Brown Deer Rd | PO Box 245036 | Milwaukee, WI 53224-9536 | 800-876-3837 | 414-355-0400  
 México | Badger Meter de las Americas, S.A. de C.V. | Pedro Luis Ogazón N°32 | Esq. Angelina N°24 | Colonia Guadalupe Inn | CP 01050 | México, DF | México | +52-55-5662-0882  
 Europe, Eastern Europe Branch Office (for Poland, Latvia, Lithuania, Estonia, Ukraine, Belarus) | Badger Meter Europe | ul. Korfantego 6 | 44-193 Knurów | Poland | +48-32-236-8787  
 Europe, Middle East and Africa | Badger Meter Europa GmbH | Nurtinger Str 76 | 72639 Neuffen | Germany | +49-7025-9208-0  
 Europe, Middle East Branch Office | Badger Meter Europe | PO Box 341442 | Dubai Silicon Oasis, Head Quarter Building, Wing C, Office #C209 | Dubai / UAE | +971-4-371 2503  
 Slovakia | Badger Meter Slovakia s.r.o. | Racianska 109/B | 831 02 Bratislava, Slovakia | +421-2-44 63 83 01  
 Asia Pacific | Badger Meter | 80 Marine Parade Rd | 21-06 Parkway Parade | Singapore 449269 | +65-63464836  
 China | Badger Meter | 7-1202 | 99 Hangzhong Road | Minhang District | Shanghai | China 201101 | +86-21-5763 5412  
 Switzerland | Badger Meter Swiss AG | Mittelholzerstrasse 8 | 3006 Bern | Switzerland | +41-31-932 01 11